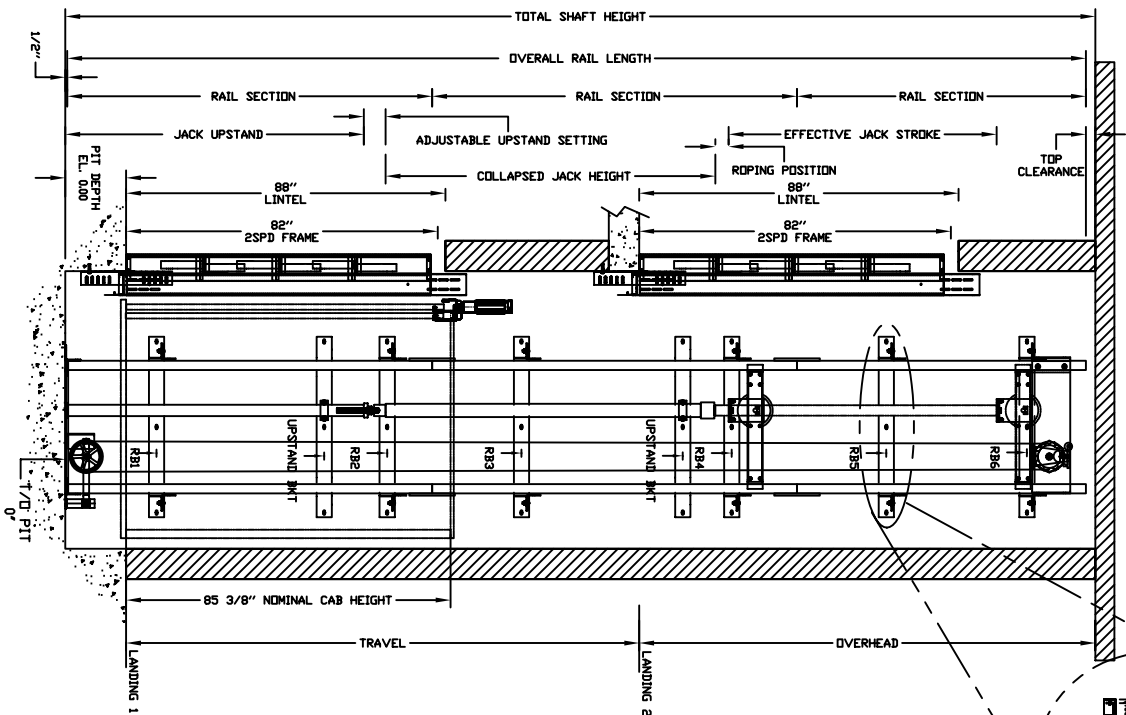


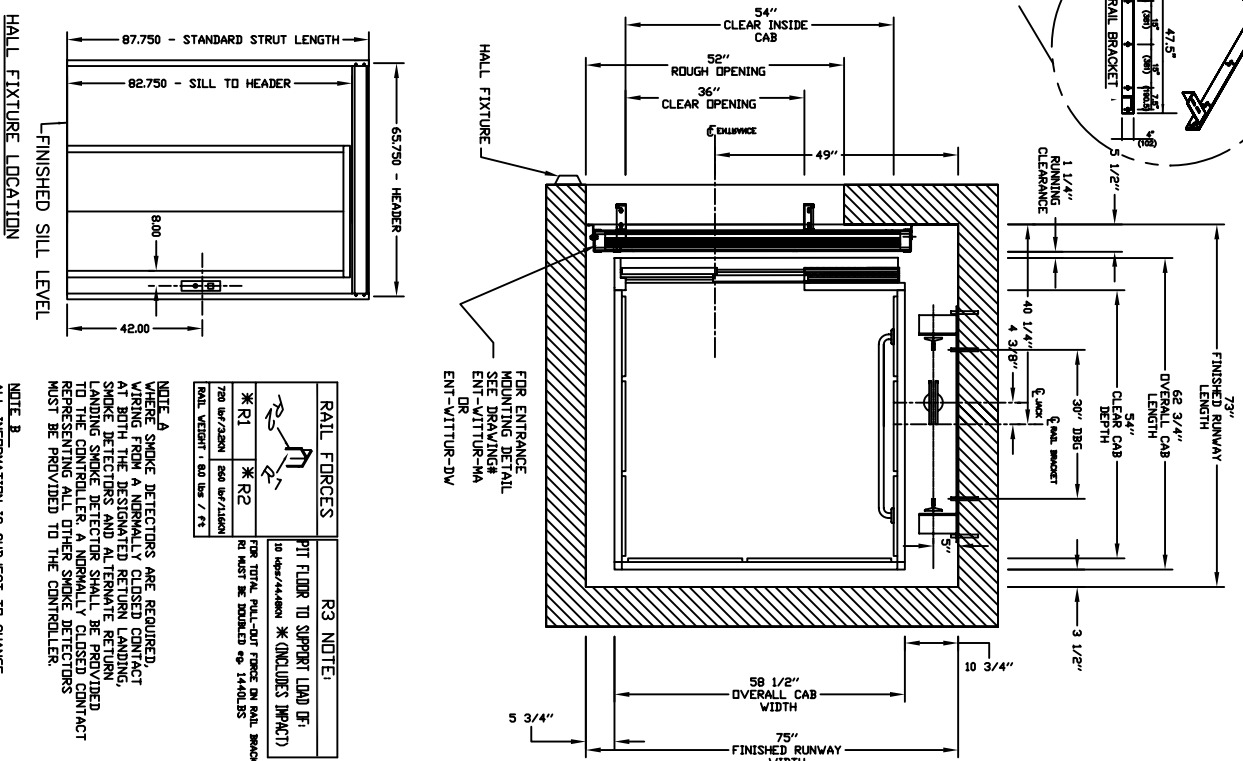
SECTIONAL VIEW - ORION-5454 (1L)



PIT / OVERHEAD REQUIREMENTS	
MAX. SPEED (ft./min)	PIT
30	14" ***
TOTAL TRAVEL	OVERHEAD
131" (3327)	120" (3048)

\*\*\* NOTE: Additional pit equipment required when over 36" deep, consult your local dealer for details

PLAN VIEW - ORION-5454 (1L) 2 SPEED WITTUR DOORS



HALL FIXTURE LOCATION

FINISHED SILL LEVEL

RAIL FORCES		PIT NOTE:	
*R1	*R2	R3	
FOR TOTAL FULL-DUTY FORCE ON RAIL BRACKET, R3 MUST BE DIMENSIONED AS 1440 LBS.		PIT FLOOR TO SUPPORT LOAD (SEE DRAWING # ENT-VITUR-4A OR ENT-VITUR-DW)	
720 LB/2400	560 LB/1400	TO 1000/4400 LBS	
RAIL WEIGHT: 60 LBS / FT			

NOTE: A SMOKE DETECTORS ARE REQUIRED, WIRING FROM A NORMALLY CLOSED CONTACT AT BOTH THE DESIGNATED RETURN LANDING, SMOKE DETECTORS AND ALTERNATE RETURN LANDING SMOKE DETECTOR SHALL BE PROVIDED TO THE CONTROLLER, A NORMALLY CLOSED CONTACT REPRESENTING ALL OTHER SMOKE DETECTORS MUST BE PROVIDED TO THE CONTROLLER.

NOTE: B ALL INFORMATION IS SUBJECT TO CHANGE. PLEASE REFERENCE OUR ON-LINE DRAWINGS AT WWW.CONCORDELEVATOR.COM FOR THE MOST RECENT UPDATES

PROVISIONS BY OTHERS

**\*GENERAL**  
HOISTWAY - THE HOISTWAY MUST BE IN ACCORDANCE WITH SAFETY CODE FOR ELEVATORS (ASME A17.1 OR 344-2000) AND ALL STATE/PROVINCIAL AND LOCAL CODES.  
PLUMB HOISTWAY - DUE TO CLOSE RUNNING CLEARANCES DWIVER/AGENT MUST ENSURE THAT HOISTWAY AND PIT (WHERE PROVIDED) ARE LEVEL, PLUMB AND SQUARE AND ARE IN ACCORDANCE WITH THE DIMENSIONS ON THESE DRAWINGS.  
MINIMUM OVERHEAD CLEARANCE - DWIVER/AGENT MUST ENSURE MINIMUM OVERHEAD CLEARANCE IS IN COMPLIANCE WITH CODES.  
CONSTRUCTION SITE - DWIVER/AGENT TO PROVIDE ALL MASONRY, CONCRETE, BRICK, FINISHES AS REQUIRED AND SHALL PATCH AND FINISH ALL CONSTRUCTION. FINISHES TO BE CUT, DRILLED OR ALTERED IN ANY WAY TO PERMIT THE PROPER INSTALLATION OF THE LIFT.  
DIMENSIONS - CONTRACTOR/CUSTOMER TO VERIFY ALL DIMENSIONS AND REPORT ANY DISCREPANCIES TO OUR OFFICE IMMEDIATELY.

**\*STRUCTURAL**  
FLOOR/SUPPORT WALL LOADS - STRUCTURAL ENGINEER TO ASSURE THAT BUILDING AND SHAFT WILL SAFELY SUPPORT ALL LOADS IMPROSED BY THE LIFT EQUIPMENT. REFER TO THE TABLES ON THIS DRAWING FOR LOADS IMPROSED BY THE EQUIPMENT.  
DOORS - SUITABLE LINTELS MUST BE PROVIDED BY DWIVER/AGENT. DOOR FRAMES ARE NOT DESIGNED TO SUPPORT OVERHEAD WALL LOADS.

**\*MACHINE ROOM**  
LOCATION / ACCESS - MACHINE ROOM LOCATED AT THE LOWEST LEVEL. ACCESS TO HOISTWAY, UNLESS SHOWN OTHERWISE ON THE LIFT/DRAWINGS. FIELD ADJUSTMENT BY INSTALLER MAY BE TO MACHINE ROOM TO BE THROUGH A SELF CLOSING AND SELF LOCKING DOOR.  
SLEEVES FOR OIL & ELECTRIC LINES - PROVIDED BY OTHERS, FROM MACHINE ROOM TO HOISTWAY (POSITION PER INSTALLERS INSTRUCTIONS).

INPUT VOLTAGE (V/PH/PHASE)	DISCONNECT SIZE (AMPS)	TIME DELAY (SECS)	FULL LOAD (AMPS)
208/3PH/460HTZ	30	30	15.6
230/1PH/460HTZ	60	50	21
CAB LIGHTS	115/1PH	15	

**\*ELECTRICAL**  
POWER SUPPLY - (SEE SPECIFICATIONS) LOCKABLE FUSED DISCONNECT WITH AUXILIARY CONTACT TO BREAK THE BATTERY FEED, OR CIRCUIT BREAKERS WITH A 3-POLE BREAKER FOR BATTERY FEED REQUIRED, IN COMPLIANCE WITH ELECTRICAL CODE AS FOLLOWS:  
(LOCATED ON WALL ON LOCK JAMB SIDE OF MACHINE ROOM DOOR)  
PERMANENT POWER - BEFORE INSTALLATION CAN BEGIN, PERMANENT POWER MUST BE SUPPLIED.  
LIGHTING - DWIVER/AGENT TO ENSURE AT LEAST 5 FC OR 54 LUX AMBIENT LIGHTING OVER ELEVATOR AREA.

**\*ENTRANCES**  
FASCIA PANEL BELOW UPPER LEVEL ENTRANCE - WHERE REQUIRED, FASCIA PANEL MUST BE FASTENED TO A SOLID WALL AND BE PERPENDICULAR TO THE FLOOR AND WALLS. HOISTWAY FASCIA IS NOT SELF-SUPPORTING FOR LONG CONTINUOUS RUNS. VOID OF ENTRANCES ADEQUATE SUPPORT AND THE FASCIA MUST BE PROVIDED BY OTHERS.  
ENTRANCE ASSEMBLIES - ENTRANCE ASSEMBLIES MUST BE ADJUSTED TO ALIGN WITH FLOOR AND INTERLOCK EQUIPMENT. OTHERS TO ALLOW AN ADEQUATE ROUGH OPENING.

RETURN WALLS - RETURN WALLS AT ENTRANCES MUST BE BUILT-IN BY OTHERS AFTER ENTRANCE ASSEMBLIES ARE IN PLACE. ENTRANCE ASSEMBLY MUST BE SECURELY FASTENED TO WALLS BY ELEVATOR CONTRACTOR.



LU/LA  
ORION MODEL 5454 (1L)

REV-000